

# 01 Series Modular Valves

## Type of Modular Valve

Class	Name and Model Numbers	Graphic Symbols	Page	Class	Name and Model Numbers	Graphic Symbols	Page	
Solenoid Operated Directional Valve	(S-) DSG-01-**-**-70 E-DSG-01-**-**-D**-70 T-DSG-01-**-**-D24**-70 G-DSG-01-**-**-**-51		★	Flow Control Valves	Throttle Valves (for "P-Line") MSP-01-50		F-29	
	Throttle Valves (for "T-Line") MST-01-50		F-29					
Pressure Control Valves	Relief Valves (for "P-Line") MBP-01-**-**-70		F-12		Check and Throttle Valves (for "P-Line") MSCP-01-30		F-30	
	Relief Valves (for "A-Line") MBA-01-**-**-70		F-12		Throttle and Check Valves (for "A-Line", Meter-out) MSA-01-X-70		F-31	
	Relief Valves (for "B-Line") MBB-01-**-**-70		F-12		Throttle and Check Valves (for "A-Line", Meter-in) MSA-01-Y-70		F-31	
	Reducing Valves (for "P-Line") MRP-01-**-**-70		F-14		Throttle and Check Valves (for "B-Line", Meter-out) MSB-01-X-70		F-31	
	Reducing Valves (for "A-Line") MRA-01-**-**-70		F-14		Throttle and Check Valves (for "B-Line", Meter-in) MSB-01-Y-70		F-31	
	Reducing Valves (for "B-Line") MRB-01-**-**-70		F-14		Throttle and Check Valves (for "A&B-Lines", Meter-out) MSW-01-X-70		F-31	
	Two Pressure Reducing Valves (for "P-Line") MRDP-01-**-**-10		F-16		Throttle and Check Valves (for "A&B-Lines", Meter-in) MSW-01-Y-70		F-31	
	Brake Valves MBR-01-**-30		F-18		Throttle and Check Valves (for "A&B-Lines", Meter-out, Meter-in) MSW-01-XY-70		F-31	
	Sequence Valves (for "P-Line") MHP-01-**-70		F-19		Directional Control Valves	Check Valves (for "P-Line") MCP-01-**-70		F-33
	Counterbalance Valves (for "A-Line") MHA-01-**-70		F-19			Check Valves (for "A-Line") MCA-01-**-70		F-33
	Counterbalance Valves (for "B-Line") MHB-01-**-70		F-19	Check Valves (for "B-Line") MCB-01-**-70			F-33	
	Pressure Switch Valves (for "P-Line") MJP-01-**-**-10		F-22	Check Valves (for "T-Line") MCT-01-**-70			F-33	
Pressure Switch Valves (for "A-Line") MJA-01-**-**-10		F-22	Check Valves (for "A&B-Line") MCW-01-**-70			F-33		
Pressure Switch Valves (for "B-Line") MJB-01-**-**-10		F-22	Anti-Cavitation Valves MAC-01-30			F-35		
Pressure Switch Valves (for "A&B-Line") MJW-01-J-**-10		F-22	Pilot Operated Check Valves (for "A-Line") MPA-01-**-**-70			F-36		
Flow Control Valves (for "P-Line") MFP-01-10		F-25	Pilot Operated Check Valves (for "B-Line") MPB-01-**-**-70			F-36		
Flow Control and Check Valves (for "A-Line", Meter-out) MFA-01-X-10		F-25	Pilot Operated Check Valves (for "A&B-Lines") MPW-01-**-**-70			F-36		
Flow Control and Check Valves (for "A-Line", Meter-in) MFA-01-Y-10		F-25	Modular Plates and Mounting Bolts	End Plates (Blocking Plates) MDC-01-A-30			F-38	
Flow Control and Check Valves (for "B-Line", Meter-out) MFB-01-X-10		F-25		End Plates (Bypass plates) MDC-01-B-30			F-38	
Flow Control and Check Valves (for "B-Line", Meter-in) MFB-01-Y-10		F-25		Connecting Plates (for "P&A-Lines") MDS-01-PA-30			F-38	
Flow Control and Check Valves (for "A&B-Lines", Meter-out) MFW-01-X-10		F-25		Connecting Plates (for "P&B-Lines") MDS-01-PB-30		F-38		
Flow Control and Check Valves (for "A&B-Lines", Meter-in) MFW-01-Y-10		F-25		Connecting Plates (for "A&T-Lines") MDS-01-AT-30		F-38		
Temperature Compensated Throttle and Check Valves (for "A-Line", Meter-out) MSTA-01-X-10		F-27		Base Plates MMC-01-**-40		F-39		
Temperature Compensated Throttle and Check Valves (for "B-Line", Meter-out) MSTB-01-X-10		F-27		Bolt Kits MBK-01-**-70		F-41		
Temperature Compensated Throttle and Check Valves (for "A&B-Lines", Meter-out) MSTW-01-X-10		F-27						

★ Please refer to the catalog page of "E: Directional Control Valves"

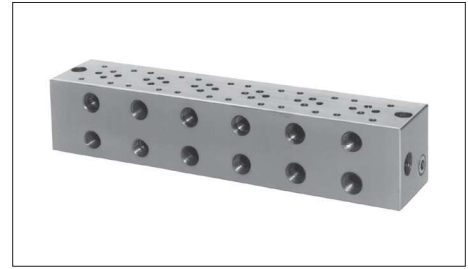
# Base Plates For Modular Valves

## Specifications

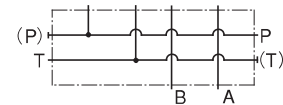
Max. Operating Pressure.....25 MPa

## Model Number Designation

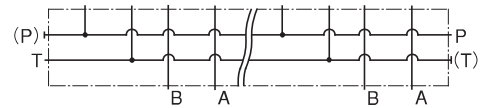
MMC	-01	-6	-40
Series Number	Plate Size	Number of Stations	Design Number
MMC: Base Plate	01	1: 1 Station 2: 2 Stations 3: 3 Stations 4: 4 Stations 5: 5 Stations 6: 6 Stations 7: 7 Stations 8: 8 Stations 9: 9 Stations 10: 10 Stations	40



Graphic Symbols

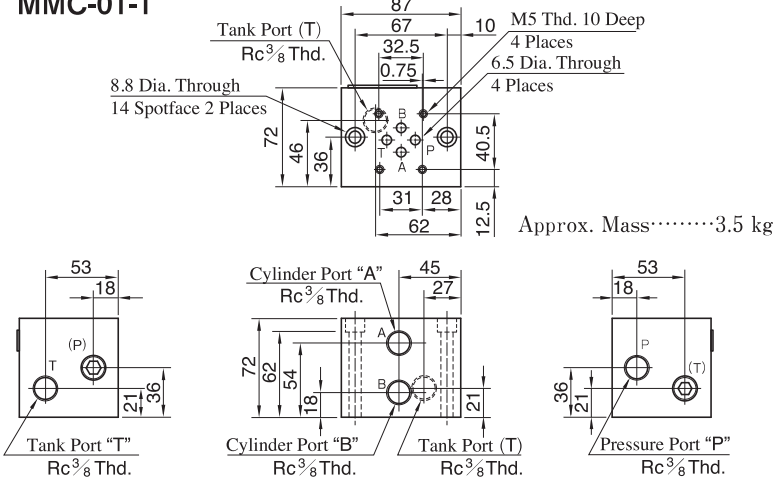


MMC-01-1



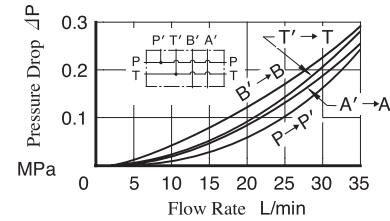
MMC-01-2~10

### MMC-01-1

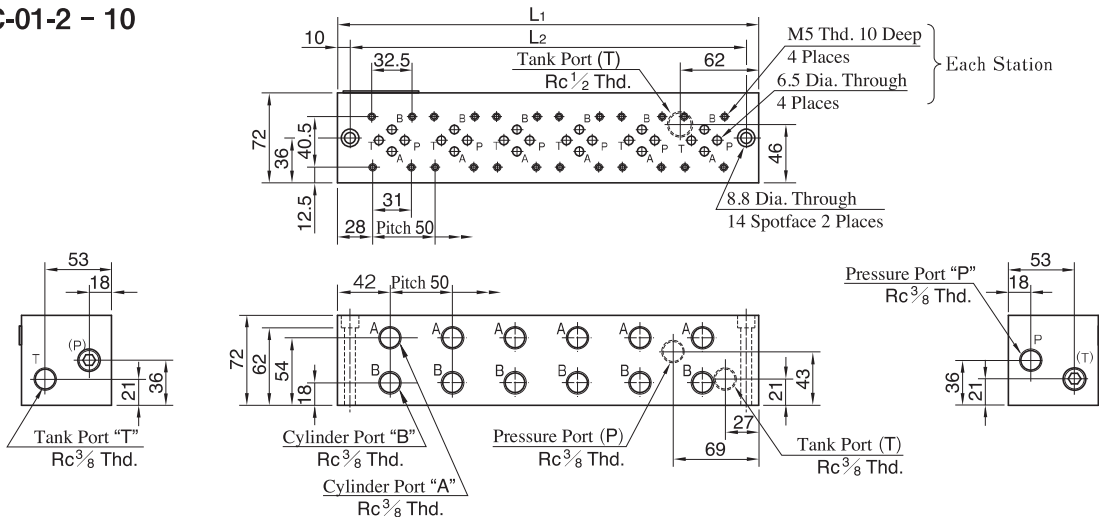


## Pressure Drop

Hydraulic Fluid: Viscosity 35 mm<sup>2</sup>/s,  
Specific Gravity 0.850



### MMC-01-2 - 10



Model Numbers	L1	L2	Mass kg
MMC-01-2	137	117	5.5
MMC-01-3	187	167	7.0
MMC-01-4	237	217	8.5
MMC-01-5	287	267	10.0
MMC-01-6	337	317	11.5

Model Numbers	L1	L2	Mass kg
MMC-01- 7	387	367	13.0
MMC-01- 8	437	417	14.5
MMC-01- 9	487	467	16.0
MMC-01-10	537	517	17.5

01 Series Modular Valves

**■ Instructions**

- Port Used: Base plate has three (two, in case of 1 station type) pressure port "P"s and four tank port "T"s. Any one of these ports or two or more ports may be used. However, please note that the ports marked with (P) or (T) in the drawing are normally plugged. Remove the plugs when using such ports. Make sure that ports that are not currently used are properly plugged.

**■ Interface Mounting Surface Dimensions for 01 Series Modular Valve**

When standard base plates (MMC-01) are not used, the mounting surface described below must be prepared. The mounting surface should have a good machined finish. ( $\sqrt{\text{Ra}}$ )

