

## ■ Proportional Electro-Hydraulic Pilot Relief Valves

The valve can be used as a pilot valve of the Proportional Electro-Hydraulic Control Valves.

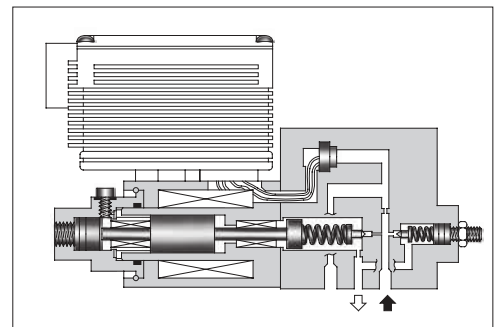
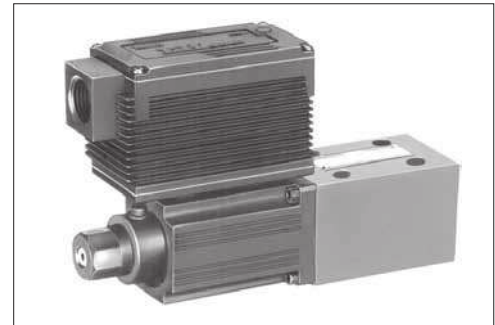
The valve can also be used as a relief valve for the hydraulic system where a small flow rate and continuous pressure control are required.

### ■ Specifications

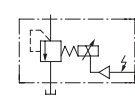
Model Numbers	EHDG-01*
Description	EHDG-01*
Max. Operating Pres.	24.5 MPa (3550 PSI)
Max. Flow	2 L/min (.53 U.S.GPM)
Min. Flow	0.3 L/min (.08 U.S.GPM)
Pressure Adjustment Range	Refer to Model Number Designation
Coil Resistance	10 Ω
Hysteresis	3% (1%)* <sup>1</sup> or less
Repeatability	1%* <sup>2</sup> or less
Frequency Response	B: 10 (27) Hz * <sup>1</sup> C: 10 (27) Hz * <sup>1</sup> (-90 degree) H: 12 (27) Hz * <sup>1</sup>
Supply Electric Power	24 V DC (21 to 28 V DC Included Ripple)
Power Input (Max.)	28 W
Input Signal	B: 6.9 MPa (1000 PSI) / 5 V DC C: 15.7 MPa (2275 PSI) / 5 V DC H: 24.5 MPa (3550 PSI) / 5 V DC
Input Impedance	10 kΩ
Alarm Signal Output (Open Collector)	Voltage: Max. 30 V DC Current: Max. 40 mA
Pressure Signal Output	B: 5 V DC / 6.9 MPa (1000 PSI) C: 5 V DC / 15.7 MPa (2275 PSI) H: 5 V DC / 24.5 MPa (3550 PSI)
Ambient Temperature	0 - 50°C (32 - 122°F) (With Circulated Air)

★1. The value in ( ) is for the closed-loop type.

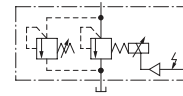
★2. The repeatability of the valve is obtained by having it tested independently on the conditions similar to its original testing.



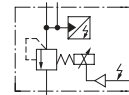
### Graphic Symbols



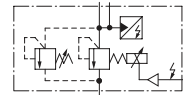
Open-Loop Type



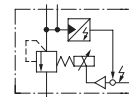
Open-Loop Type with Safety Valve



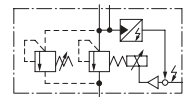
Open-Loop Type with Sensor



Open-Loop Type with Safety Valve & Sensor



Closed-Loop Type



Closed-Loop Type with Safety Valve

### ■ Model Number Designation

F-	EHD	G	-01	V	-B	-S	-1	-PN	T15	M10	-50
Special Seals	Series Number	Type of Mounting	Valve Size	Applicable Control	Pres. Adj. Range MPa (PSI)	Control Type	Safety Valve	P-Line Orifice	T-Line Orifice	P-B Line Orifice	Design Number
<b>F:</b> Special Seals for Phosphate Ester Type Fluid (Omit if not required)	<b>EHD:</b> Proportional Electro-Hydraulic Pilot Relief Valve	<b>G:</b> Sub-plate Mounting	<b>01</b>	<b>None:</b> For general use <b>V:</b> Vent Control of Relief Valve (Omit if not required)	<b>B:</b> 0.5 - 6.9 (70 - 1000) <b>C:</b> 1 - 15.7 (145 - 2275) <b>H:</b> 1.2 - 24.5 (175 - 3550)	<b>None:</b> Open-Loop <b>S:</b> Open-Loop with Sensor <b>L:</b> Closed-Loop* <sup>1</sup>	<b>None:</b> Without Safety Valve <b>1:</b> With Safety Valve	<b>PN:</b> Without Orifice (Standard)	<b>T15</b> <b>T13</b> <b>T11</b> * <sup>2</sup>	<b>M10:</b> Standard Orifice	<b>50</b>

★1. For closed-loop models, specify applicable control code "V" even though the valve may not be used as vent control of relief valve.

★2. Standard of T-line Orifice.  
Pres. Adj. Range B:T15, C:T13, H:T11.