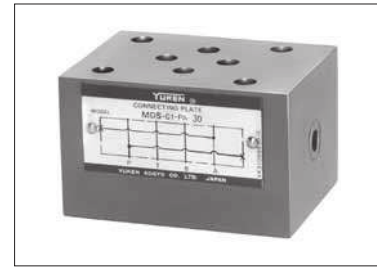


## Connecting Plate

These plates are used for detecting pressure of each line.

### Specifications

| Model Numbers    | Max. Operating Pressure<br>MPa (PSI) | Max. Flow<br>L/min (U.S.GPM) |
|------------------|--------------------------------------|------------------------------|
| MDS-01-*-30/3090 | 31.5 (4570)                          | 35 (9.25)                    |



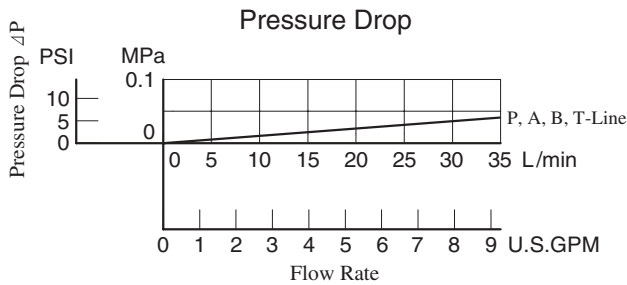
### Model Number Designation

| F-  | MDS                           | -01        | -PA   | -30           | *               |
|---|-------------------------------|------------|---|---------------|-----------------|
| Special Seals   | Series Number                 | Plate Size | Type of Detecting Line  | Design Number | Design Standard |
| <b>F</b> : Special Seals for Phosphate Ester Type Fluids (Omit if not required) | <b>MDS</b> : Connecting Plate | <b>01</b>  | <b>PA</b> : P&A-Lines<br><b>PB</b> : P&B-Lines<br><b>AT</b> : A&T-Lines | <b>30</b>     | Refer to ★      |

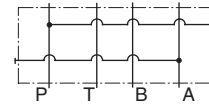
★ Design Standards: None ..... Japanese Standard "JIS" and European Design Standard  
90 ..... N. American Design Standard

### Pressure Drop

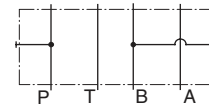
Hydraulic Fluid: Viscosity 35 mm<sup>2</sup>/s (164 SSU),  
Specific Gravity 0.850



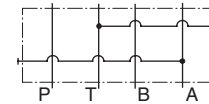
### Graphic Symbols



MDS-01-PA

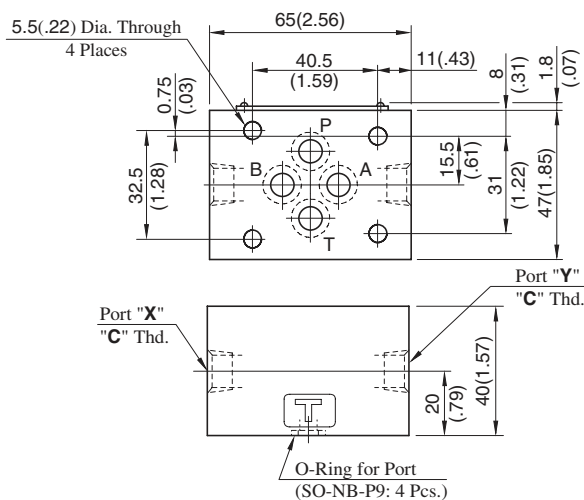


MDS-01-PB



MDS-01-AT

### MDS-01-\*-30/3090



Approx. Mass.....0.8 kg (1.8 lbs.)

| Model Numbers | Pressure Detecting Line |          |
|---------------|-------------------------|----------|
|               | Port "X"                | Port "Y" |
| MDS-01-PA     | P-Line                  | A-Line   |
| MDS-01-PB     | B-Line                  | P-Line   |
| MDS-01-AT     | T-Line                  | A-Line   |

| Model Numbers | Thread Size "C" Thd. |
|---------------|----------------------|
| MDS-01-*-30   | Rc 1/4 = 1/4 BSP.Tr  |
| MDS-01-*-3090 | 1/4 NPT              |

**DIMENSIONS IN  
MILLIMETRES (INCHES)**