

03 Series Modular Valves

Type of Modular Valve

Class	Name and Model Numbers	Graphic Symbols	Page	Class	Name and Model Numbers	Graphic Symbols	Page	
Solenoid Operated Directional Valves (S-) DSG-03-***-50 E-DSG-03-***-D-50 T-DSG-03-***-D24-50 G-DSG-03-***-51								★
Pressure Control Valves	Relief Valves (for "P-Line") MBP-03-**-70		F-48	Flow Control Valves	Temperature Compensated Throttle and Check Valves (for "A&B-Lines", Meter-out) MSTW-03-X-20		F-58	
	Relief Valves (for "A-Line") MBA-03-**-70		F-48		Throttle Valves (for "P-Line") MSP-03-30		F-60	
	Relief Valves (for "B-Line") MBB-03-**-70		F-48		Check and Throttle Valves (for "P-Line") MSCP-03-20		F-61	
	Relief Valves (for "A&B-Lines") MBW-03-**-70		F-48		Throttle and Check Valves (for "A-Line", Meter-out) MSA-03-X-70		F-62	
	Reducing Valves (for "P-Line") MRP-03-**-70		F-50		Throttle and Check Valves (for "A-Line", Meter-in) MSA-03-Y-70		F-62	
	Reducing Valves (for "A-Line") MRA-03-**-70		F-50		Throttle and Check Valves (for "B-Line", Meter-out) MSB-03-X-70		F-62	
	Reducing Valves (for "B-Line") MRB-03-**-70		F-50		Throttle and Check Valves (for "B-Line", Meter-in) MSB-03-Y-70		F-62	
	Reducing Valves for Low Pressure Setting (for "P-Line") MRLP-03-10		F-52		Throttle and Check Valves (for "A&B-Lines", Meter-out) MSW-03-X-70		F-62	
	Reducing Valves for Low Pressure Setting (for "A-Line") MRLA-03-10		F-52	Throttle and Check Valves (for "A&B-Lines", Meter-in) MSW-03-Y-70		F-62		
	Reducing Valves for Low Pressure Setting (for "B-Line") MRLB-03-10		F-52	Directional Control Valves	Check Valves (for "P-Line") MCP-03-**-70		F-64	
	Sequence Valves (for "P-Line") MHP-03-**-20		F-54		Check Valves (for "A-Line") MCA-03-**-70		F-64	
	Counterbalance Valves (for "A-Line") MHA-03-**-20		F-54		Check Valves (for "B-Line") MCB-03-**-70		F-64	
	Counterbalance Valves (for "B-Line") MHB-03-**-20		F-54		Check Valves (for "T-Line") MCT-03-**-70		F-64	
	Flow Control Valves (for "P-Line") MFP-03-11		F-56		Check Valves (for "A&B-Lines") MCW-03-**-70		F-64	
Flow Control and Check Valves (for "A-Line", Meter-in) MFA-03-X-11		F-56	Check Valves (for "P&T-Lines") MCPT-03-P-**-T-10			F-66		
Flow Control and Check Valves (for "A-Line", Meter-in) MFA-03-Y-11		F-56	Anti-Cavitation Valves MAC-03-10			F-67		
Flow Control and Check Valves (for "B-Line", Meter-out) MFB-03-X-11		F-56	Pilot Operated Check Valves (for "A-Line") MPA-03-**-70			F-68		
Flow Control and Check Valves (for "B-Line", Meter-in) MFB-03-Y-11		F-56	Pilot Operated Check Valves (for "B-Line") MPB-03-**-70			F-68		
Flow Control and Check Valves (for "A&B-Lines", Meter-out) MFW-03-X-11		F-56	Pilot Operated Check Valves (for "A&B-Lines") MPW-03-**-70			F-68		
Flow Control and Check Valves (for "A&B-Lines", Meter-in) MFW-03-Y-11		F-56	Modular Plates and Mounting Bolts		End Plates (Blocking Plates) MDC-03-A-10		F-70	
Temperature Compensated Throttle and Check Valves (for "A-Line", Meter-out) MSTA-03-X-20		F-58			End Plates (Bypass Plates) MDC-03-B-10		F-70	
Temperature Compensated Throttle and Check Valves (for "B-Line", Meter-out) MSTB-03-X-20		F-58		Connecting Plates MDS-03-10		F-70		
				Base Plates MMC-03-T-**-21		F-71		
				Bolt Kits MBK-03-**-10		F-73		

★ Refer to the relevant pages of catalog "E: DIRECTIONAL CONTROLS"

Check and Throttle Modular Valves

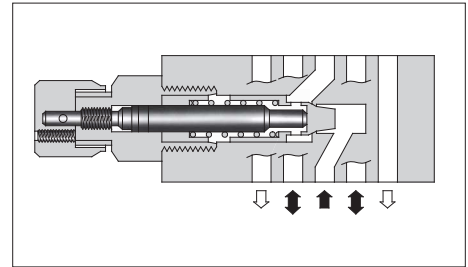
Specifications

Model Numbers	Max. Operating Pressure MPa	Max. Flow L/min
MSCP-03-20	25	70 *

★ Maximum flow decreases when the differential pressure is less than 0.8 MPa. See the "Pressure Drop at Throttle Fully Open" of this page.

Model Number Designation

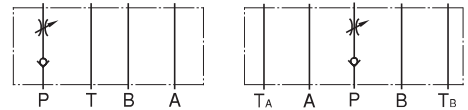
MSCP	-03	-20
Series Number	Valve Size	Design Number
MSCP: Check & Throttle Valve for P-Line	03	20



Instructions

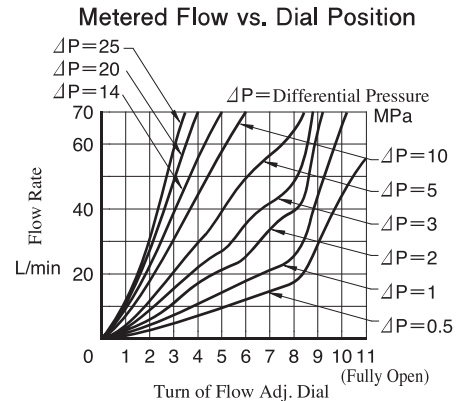
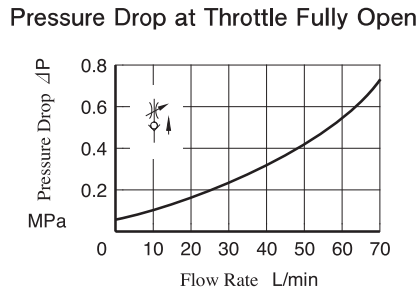
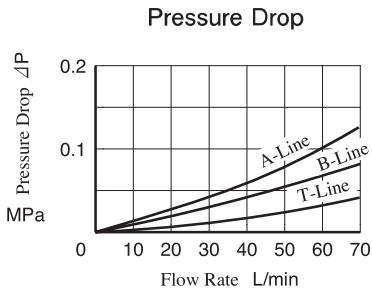
- To make flow adjustment, loosen locking screw for the dial and turn the flow adjustment dial clockwise or anti-clockwise. Be sure to re-tighten the locking screw firmly after the adjustment of the flow rate.

Graphic Symbols

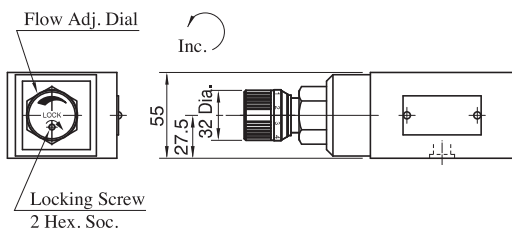
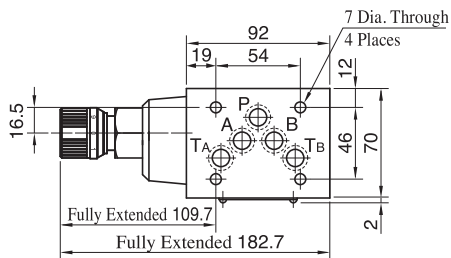


Typical Performance Characteristics

Hydraulic Fluid: Viscosity 35 mm²/s, Specific Gravity 0.850



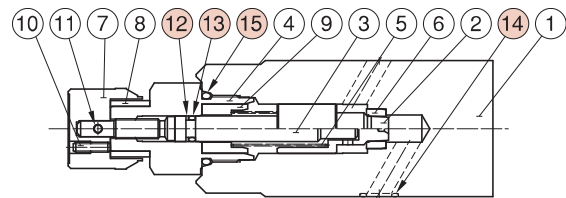
MSCP-03



Approx. Mass.....3.0 kg

List of Seals

MSCP-03



Item	Name of Parts	Part Numbers	Qty.
12	Back-up Ring	900-VK411915-2	1
13	O-Ring	OR NBR-70-1 P7-N	1
14	O-Ring	AS568-014 (NBR-90)	5
15	O-Ring	OR NBR-90 P24-N	1