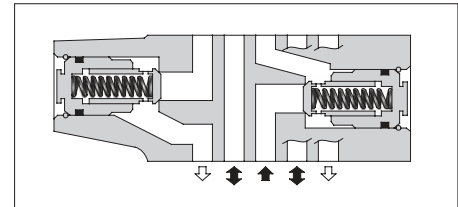
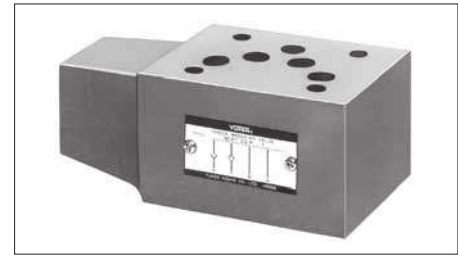


Check Modular Valves For "P&T" Lines

Specifications

| Model Numbers | Max. Operating Pressure MPa (PSI) | Max. Flow L/min (U.S.GPM) |
|------------------|--------------------------------------|------------------------------|
| MCPT-03-P*-T*-10 | 25 (3630) | 70 (18.5) |



Model Number Designation

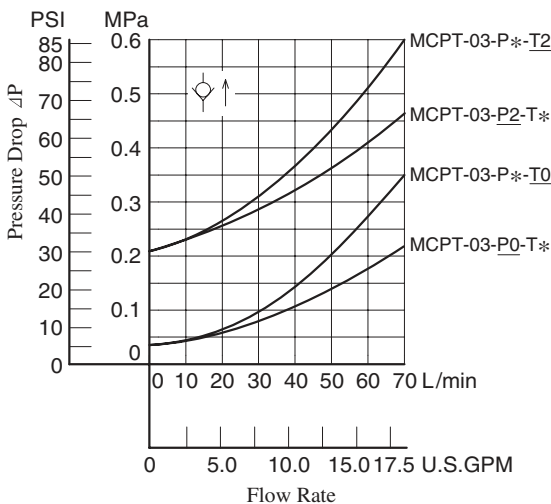
| F- | MCPT | -03 | -P0 | -T0 | -10 | * |
|---|---|------------|---|---|---------------|-----------------|
| Special Seals | Series Number | Valve Size | Cracking Pres. of P-Line MPa(PSI) | Cracking Pres. of T-Line MPa(PSI) | Design Number | Design Standard |
| F : Special Seals for Phosphate Ester Type Fluids (Omit if not required) | MCPT : Check Valve for P&T-Lines | 03 | P0 : 0.035(5) P2 : 0.2(29) | T0 : 0.035(5) T2 : 0.2(29) | 10 | Refer to ★ |

★ Design Standards: None Japanese Standard "JIS", European Design Standard and N. American Design Standard

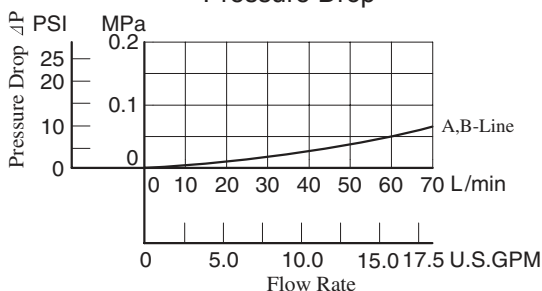
Typical Performance Characteristics

Hydraulic Fluid: Viscosity 35 mm²/s (164 SSU), Specific Gravity 0.850

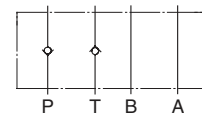
Pressure Drop for Free Flow



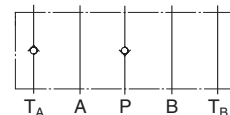
Pressure Drop



Graphic Symbol



Detailed Graphic Symbol

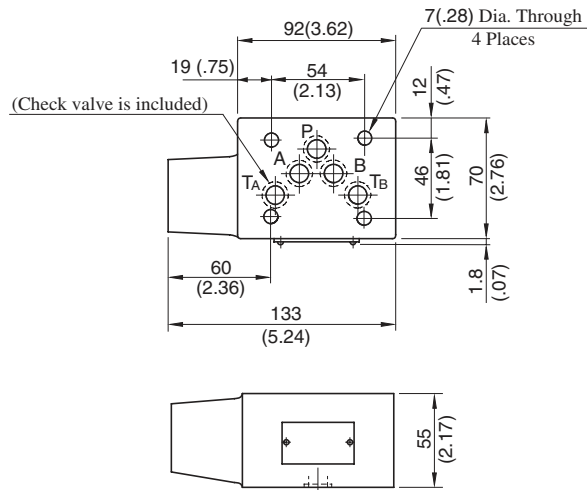


Instructions

● Tank Line Used

Check valve function of Tank Line is included in TA-Line. Therefore, the tank line for a circuit that uses this valve must be TA-line.

MCPT-03-P*-T*-10

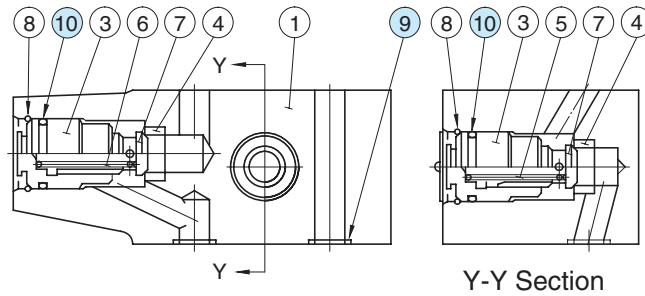


Approx. Mass.....2.7 kg (6.0 lbs.)

**DIMENSIONS IN
MILLIMETRES (INCHES)**

■ Spare Parts List

MCPT-03-P*-T*-10



Y-Y Section

● List of Seals

| Item | Name of Parts | Part Numbers | Qty. | Remarks |
|------|---------------|--------------|------|------------------------|
| 9 | O-Ring | SO-NB-A014 | 5 | Included in Seal Kit |
| 10 | O-Ring | SO-NB-P21 | 2 | Kit No.: KS-MCPT-03-10 |