

03 Series Modular Valves

Type of Modular Valve

Class	Name and Model Numbers	Graphic Symbols	Page	Class	Name and Model Numbers	Graphic Symbols	Page	
Solenoid Operated Directional Valves (S-) DSG-03-***-50 E-DSG-03-***-D-50 T-DSG-03-***-D24-50 G-DSG-03-***-51								★
Pressure Control Valves	Relief Valves (for "P-Line") MBP-03-**-70		F-48	Flow Control Valves	Temperature Compensated Throttle and Check Valves (for "A&B-Lines", Meter-out) MSTW-03-X-20		F-58	
	Relief Valves (for "A-Line") MBA-03-**-70		F-48		Throttle Valves (for "P-Line") MSP-03-30		F-60	
	Relief Valves (for "B-Line") MBB-03-**-70		F-48		Check and Throttle Valves (for "P-Line") MSCP-03-20		F-61	
	Relief Valves (for "A&B-Lines") MBW-03-**-70		F-48		Throttle and Check Valves (for "A-Line", Meter-out) MSA-03-X-70		F-62	
	Reducing Valves (for "P-Line") MRP-03-**-70		F-50		Throttle and Check Valves (for "A-Line", Meter-in) MSA-03-Y-70		F-62	
	Reducing Valves (for "A-Line") MRA-03-**-70		F-50		Throttle and Check Valves (for "B-Line", Meter-out) MSB-03-X-70		F-62	
	Reducing Valves (for "B-Line") MRB-03-**-70		F-50		Throttle and Check Valves (for "B-Line", Meter-in) MSB-03-Y-70		F-62	
	Reducing Valves for Low Pressure Setting (for "P-Line") MRLP-03-10		F-52		Throttle and Check Valves (for "A&B-Lines", Meter-out) MSW-03-X-70		F-62	
	Reducing Valves for Low Pressure Setting (for "A-Line") MRLA-03-10		F-52	Throttle and Check Valves (for "A&B-Lines", Meter-in) MSW-03-Y-70		F-62		
	Reducing Valves for Low Pressure Setting (for "B-Line") MRLB-03-10		F-52	Directional Control Valves	Check Valves (for "P-Line") MCP-03-**-70		F-64	
	Sequence Valves (for "P-Line") MHP-03-**-20		F-54		Check Valves (for "A-Line") MCA-03-**-70		F-64	
	Counterbalance Valves (for "A-Line") MHA-03-**-20		F-54		Check Valves (for "B-Line") MCB-03-**-70		F-64	
	Counterbalance Valves (for "B-Line") MHB-03-**-20		F-54		Check Valves (for "T-Line") MCT-03-**-70		F-64	
	Flow Control Valves (for "P-Line") MFP-03-11		F-56		Check Valves (for "A&B-Lines") MCW-03-**-70		F-64	
Flow Control and Check Valves (for "A-Line", Meter-in) MFA-03-X-11		F-56	Check Valves (for "P&T-Lines") MCPT-03-P-**-T-10			F-66		
Flow Control and Check Valves (for "A-Line", Meter-in) MFA-03-Y-11		F-56	Anti-Cavitation Valves MAC-03-10			F-67		
Flow Control and Check Valves (for "B-Line", Meter-out) MFB-03-X-11		F-56	Pilot Operated Check Valves (for "A-Line") MPA-03-**-70			F-68		
Flow Control and Check Valves (for "B-Line", Meter-in) MFB-03-Y-11		F-56	Pilot Operated Check Valves (for "B-Line") MPB-03-**-70			F-68		
Flow Control and Check Valves (for "A&B-Lines", Meter-out) MFW-03-X-11		F-56	Pilot Operated Check Valves (for "A&B-Lines") MPW-03-**-70			F-68		
Flow Control and Check Valves (for "A&B-Lines", Meter-in) MFW-03-Y-11		F-56	Modular Plates and Mounting Bolts		End Plates (Blocking Plates) MDC-03-A-10		F-70	
Temperature Compensated Throttle and Check Valves (for "A-Line", Meter-out) MSTA-03-X-20		F-58			End Plates (Bypass Plates) MDC-03-B-10		F-70	
Temperature Compensated Throttle and Check Valves (for "B-Line", Meter-out) MSTB-03-X-20		F-58		Connecting Plates MDS-03-10		F-70		
				Base Plates MMC-03-T-**-21		F-71		
				Bolt Kits MBK-03-**-10		F-73		

★ Refer to the relevant pages of catalog "E: DIRECTIONAL CONTROLS"

End Plates

Blocking plates are used for auxiliary mounting surface or for closing unnecessary circuits. Bypass plates are used for unidirectional circuits that require no solenoid operated directional valves.

Specifications

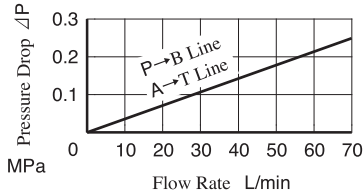
Model Numbers	Max. Operating Pressure MPa	Max. Flow L/min
MDC-03- *-10	25	70

Model Number Designation

MDC	-03	-A	-10
Series Number	Valve Size	Type of Plate	Design Number
MDC: End Plate	03	A: Blocking Plate B: Bypass Plate	10

Pressure Drop

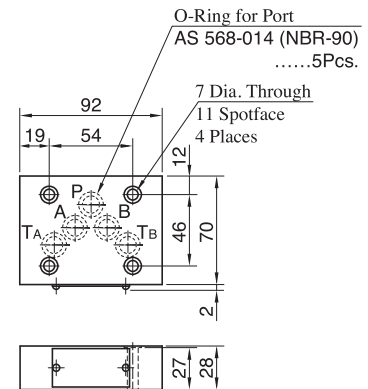
Hydraulic Fluid: Viscosity 35 mm²/s,
Specific Gravity 0.850



Model Numbers	Graphic Symbols	
MDC-03 -A		
MDC-03 -B		



MDC-03



Approx. Mass.....1.2 kg

Connecting Plates

These plates are used for detecting pressure of each line.

Model Number Designation

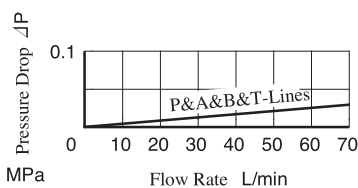
MDS	-03	-10
Series Number	Valve Size	Design Number
MDS: Connecting Plate	03	10

Specifications

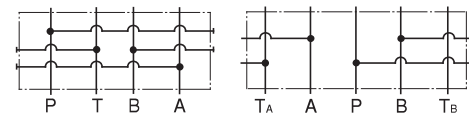
Model Numbers	Max. Operating Pressure MPa	Max. Flow L/min
MDS-03-10	25	70

Pressure Drop

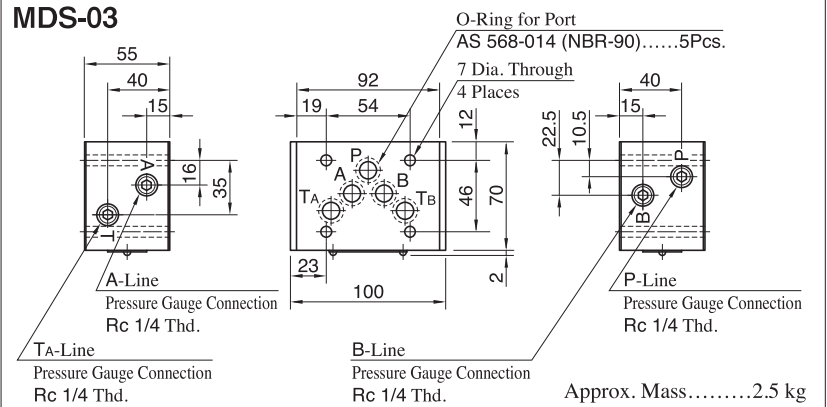
Hydraulic Fluid: Viscosity 35 mm²/s,
Specific Gravity 0.850



Graphic Symbols



MDS-03



Approx. Mass.....2.5 kg