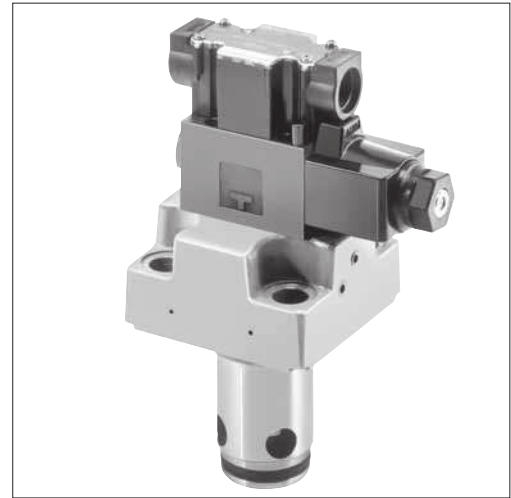


## Solenoid Operated Directional Control Logic Valves

These solenoid operated directional control logic valves are composed of directional control valves and solenoid operated directional valves combined together. The solenoid operated directional valves serve to switch pilot lines and the directional control valves are used to control the direction of the main circuits. Covers provided with various control valves are available to provide optimum control.



### Specifications

Model No.	Rated Flow L/min (U.S.GPM)	Max. Operating Pressure MPa (PSI)	Cracking Pressure MPa (PSI)	Ratio of Poppet Area	Approx. Mass kg(lbs.)
LDS-25	350 (92.5)	31.5 (4570)	Refer to Model No. Designation	2 : 1 (Annular area 50%)	4.2 (9.3)
LDS-32	500 (132)				6.5 (14.3)
LDS-40	850 (225)				10.3 (22.7)
LDS-50	1400 (370)				18.6 (41.0)
LDS-63	2100 (555)				33.6 (74.1)

Note: The rated flow is values with a pressure drop of 0.3 MPa (44 PSI) [fluid viscosity 35mm<sup>2</sup>/s (164 SSU)].

### Model Number Designation

LDS- 32 - 05 - S - 1 - O - X 05 - A100 - C - N - 14	
	Design No. LDS-25, 32, 40...14 LDS-50, 63.....13
	Type of electrical conduit connection None: Terminal box N: Plug-in connector
	Type of manual override None: Manual override pin C: Push button and lock nut (Option)
	Coil type A*: AC, R*: AC→DC rectified D*: DC, RQ*: AC→DC rectified* (quick return)
	Designation of orifice
	Location of orifice None: No orifice P: Pilot port P, B: Pilot port B A: Pilot port A, X: Pilot port X
	Solenoid operated valve None: With solenoid operated valve O: Without solenoid operated valve
	Cover type (See the table right) 1, 2, 3, 4, 5, 6
	Poppet shape None: Without cushion S: With cushion
	Cracking pressure (A→B) None: No spring 05: 0.05 MPa (7 PSI) 20: 0.2 MPa (29 PSI)
	Valve Size: 25, 32, 40, 50, 63
	Solenoid operated directional control logic valve

\* Applicable only for LDS-50, 63.

### List of Cover Types

Cover Type Designation	Graphic Symbols	Valve Size				
		25	32	40	50	63
Normally Closed (1)		<input type="radio"/>	<input type="radio"/>	<input type="radio"/>	<input type="radio"/>	<input type="radio"/>
Normally Open (2)		<input type="radio"/>	<input type="radio"/>	<input type="radio"/>	<input type="radio"/>	<input type="radio"/>
Normally Closed with Shuttle Valve (3)		<input type="radio"/>	<input type="radio"/>	<input type="radio"/>	<input type="radio"/>	<input type="radio"/>
Normally Open with Shuttle Valve (4)		<input type="radio"/>	<input type="radio"/>	<input type="radio"/>	<input type="radio"/>	<input type="radio"/>
Normally Closed with Shuttle Valve (5)		<input type="radio"/>	<input type="radio"/>	<input type="radio"/>	<input type="radio"/>	<input type="radio"/>
Normally Open with Shuttle Valve (6)		<input type="radio"/>	<input type="radio"/>	<input type="radio"/>	<input type="radio"/>	<input type="radio"/>

Note: In case of LDS-\*\*\*-\*\*\*-O (without solenoid operated valve), the graphic symbol for the solenoid operated valve is excluded.