

01 Series Modular Valves

Type of Modular Valve

Class	Name and Model Numbers	Graphic Symbols	Page	Class	Name and Model Numbers	Graphic Symbols	Page	
Solenoid Operated Directional Valve	(S-) DSG-01-**-**-70 E-DSG-01-**-**-D**-70 T-DSG-01-**-**-D24**-70 G-DSG-01-**-**-**-51		★	Flow Control Valves	Throttle Valves (for "P-Line") MSP-01-50		F-29	
	Throttle Valves (for "T-Line") MST-01-50		F-29					
Pressure Control Valves	Relief Valves (for "P-Line") MBP-01-**-**-70		F-12		Check and Throttle Valves (for "P-Line") MSCP-01-30		F-30	
	Relief Valves (for "A-Line") MBA-01-**-**-70		F-12		Throttle and Check Valves (for "A-Line", Meter-out) MSA-01-X-70		F-31	
	Relief Valves (for "B-Line") MBB-01-**-**-70		F-12		Throttle and Check Valves (for "A-Line", Meter-in) MSA-01-Y-70		F-31	
	Reducing Valves (for "P-Line") MRP-01-**-**-70		F-14		Throttle and Check Valves (for "B-Line", Meter-out) MSB-01-X-70		F-31	
	Reducing Valves (for "A-Line") MRA-01-**-**-70		F-14		Throttle and Check Valves (for "B-Line", Meter-in) MSB-01-Y-70		F-31	
	Reducing Valves (for "B-Line") MRB-01-**-**-70		F-14		Throttle and Check Valves (for "A&B-Lines", Meter-out) MSW-01-X-70		F-31	
	Two Pressure Reducing Valves (for "P-Line") MRDP-01-**-**-10		F-16		Throttle and Check Valves (for "A&B-Lines", Meter-in) MSW-01-Y-70		F-31	
	Brake Valves MBR-01-**-30		F-18		Throttle and Check Valves (for "A&B-Lines", Meter-out, Meter-in) MSW-01-XY-70		F-31	
	Sequence Valves (for "P-Line") MHP-01-**-70		F-19		Directional Control Valves	Check Valves (for "P-Line") MCP-01-**-70		F-33
	Counterbalance Valves (for "A-Line") MHA-01-**-70		F-19			Check Valves (for "A-Line") MCA-01-**-70		F-33
	Counterbalance Valves (for "B-Line") MHB-01-**-70		F-19	Check Valves (for "B-Line") MCB-01-**-70			F-33	
	Pressure Switch Valves (for "P-Line") MJP-01-**-**-10		F-22	Check Valves (for "T-Line") MCT-01-**-70			F-33	
Pressure Switch Valves (for "A-Line") MJA-01-**-**-10		F-22	Check Valves (for "A&B-Line") MCW-01-**-70			F-33		
Pressure Switch Valves (for "B-Line") MJB-01-**-**-10		F-22	Anti-Cavitation Valves MAC-01-30			F-35		
Pressure Switch Valves (for "A&B-Line") MJW-01-J-**-10		F-22	Pilot Operated Check Valves (for "A-Line") MPA-01-**-**-70			F-36		
Flow Control Valves (for "P-Line") MFP-01-10		F-25	Pilot Operated Check Valves (for "B-Line") MPB-01-**-**-70			F-36		
Flow Control and Check Valves (for "A-Line", Meter-out) MFA-01-X-10		F-25	Pilot Operated Check Valves (for "A&B-Lines") MPW-01-**-**-70			F-36		
Flow Control and Check Valves (for "A-Line", Meter-in) MFA-01-Y-10		F-25	Modular Plates and Mounting Bolts	End Plates (Blocking Plates) MDC-01-A-30			F-38	
Flow Control and Check Valves (for "B-Line", Meter-out) MFB-01-X-10		F-25		End Plates (Bypass plates) MDC-01-B-30			F-38	
Flow Control and Check Valves (for "B-Line", Meter-in) MFB-01-Y-10		F-25		Connecting Plates (for "P&A-Lines") MDS-01-PA-30			F-38	
Flow Control and Check Valves (for "A&B-Lines", Meter-out) MFW-01-X-10		F-25		Connecting Plates (for "P&B-Lines") MDS-01-PB-30		F-38		
Flow Control and Check Valves (for "A&B-Lines", Meter-in) MFW-01-Y-10		F-25		Connecting Plates (for "A&T-Lines") MDS-01-AT-30		F-38		
Temperature Compensated Throttle and Check Valves (for "A-Line", Meter-out) MSTA-01-X-10		F-27		Base Plates MMC-01-**-40		F-39		
Temperature Compensated Throttle and Check Valves (for "B-Line", Meter-out) MSTB-01-X-10		F-27		Bolt Kits MBK-01-**-70		F-41		
Temperature Compensated Throttle and Check Valves (for "A&B-Lines", Meter-out) MSTW-01-X-10		F-27						

★ Please refer to the catalog page of "E: Directional Control Valves"

Check and Throttle Modular Valves

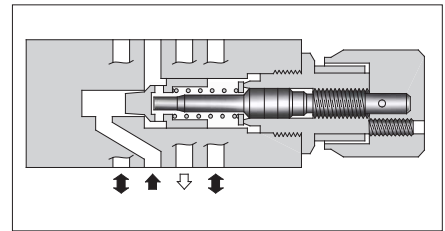
Specifications

Model Numbers	Max. Operating Pressure MPa	Max. Flow L/min
MSCP-01-30	31.5	35 *

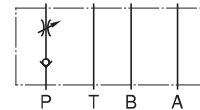
★At the low differential pressure, maximum flow is limited. See "Pressure Drop at Throttle Fully Open".

Model Number Designation

MSCP	-01	-30
Series Number	Valve Size	Design Number
MSCP: Check and Throttle MSCP: Valve for P-Line	01	30



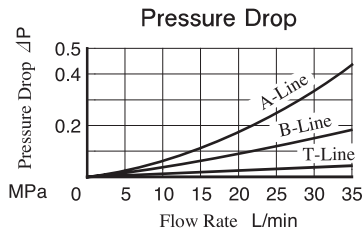
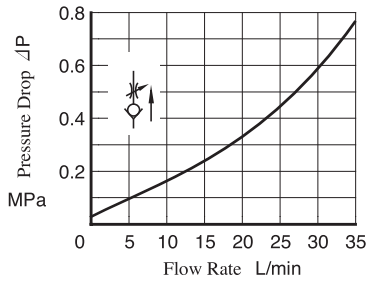
Graphic Symbol



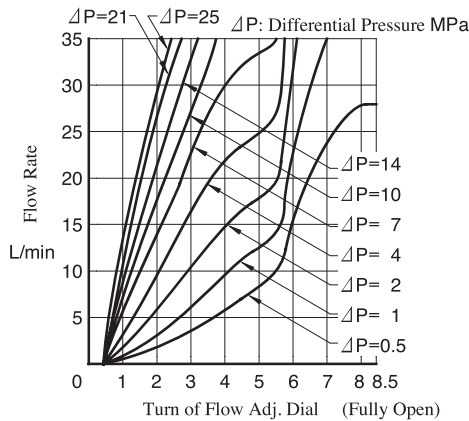
Typical Performance Characteristics

Hydraulic Fluid: Viscosity 35 mm²/s, Specific Gravity 0.850

Pressure Drop at Throttle Fully Open



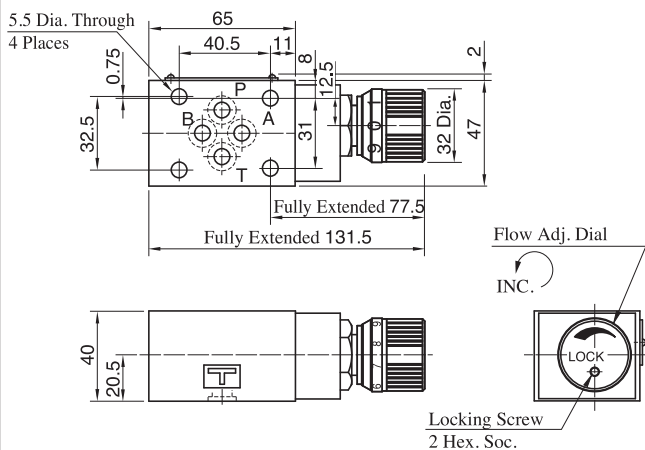
Metered Flow vs. Dial Position



Instructions

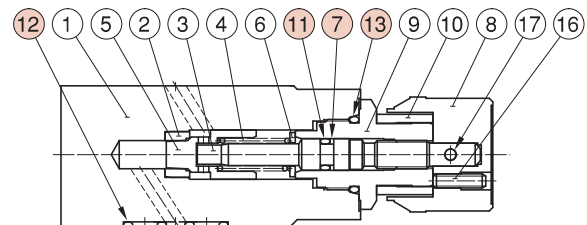
● To make flow rate adjustment, loosen locking screw for the dial and turn the flow adjustment dial clockwise or anti-clockwise. For a decrease of flow, turn the dial clockwise. Be sure to re-tighten the locking screw firmly after the adjustment of the flow rate.

MSCP-01



Approx. Mass.....1.2 kg

List of Seals MSCP-01



Item	Name of Parts	Part Numbers	Qty.
7	Back-up Ring	BR JIS B 2401-4-T2-P6	1
11	O-Ring	OR NBR-70-1 P6-N	1
12	O-Ring	OR NBR-90 P9-N	4
13	O-Ring	OR NBR-90 P18-N	1