

Check Modular Valves

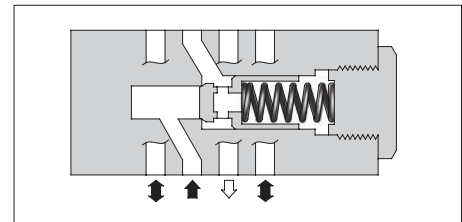
Specifications

| Model Numbers | Max. Operating Pressure MPa (PSI) | Max. Flow L/min (U.S.GPM) |
|----------------------------|--------------------------------------|------------------------------|
| MCP-01-*-30 MCT-01-*-30 | 31.5 (4570) | 35 (9.25) |

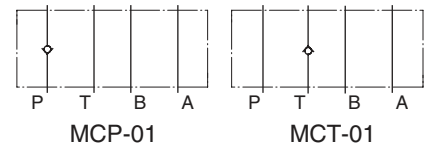
Model Number Designation

| F- | MCP | -01 | -0 | -30 | * |
|---|--|------------|---|---------------|-----------------|
| Special Seals | Series Number | Valve Size | Cracking Pressure MPa (PSI) | Design Number | Design Standard |
| F: Special Seals for Phosphate Ester Type Fluids (Omit if not required) | MCP: Check Valve for P-Line MCT: Check Valve for T-Line | 01 | 0: 0.035 (5) 2: 0.2 (29) 4: 0.4 (58) | 30 | Refer to ★ |

★ Design Standards: None Japanese Standard "JIS", European Design Standard and N. American Design Standard



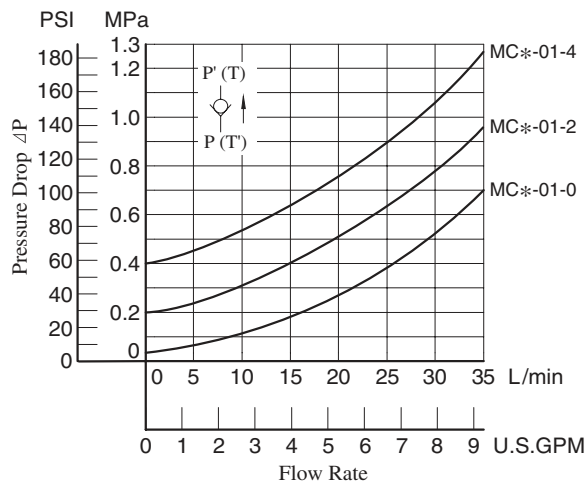
Graphic Symbols



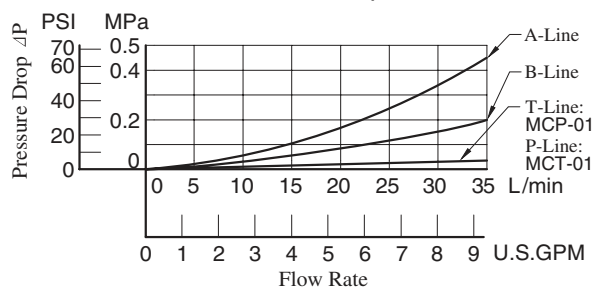
Typical Performance Characteristics

Hydraulic Fluid: Viscosity 35 mm²/s (164 SSU),
Specific Gravity 0.850

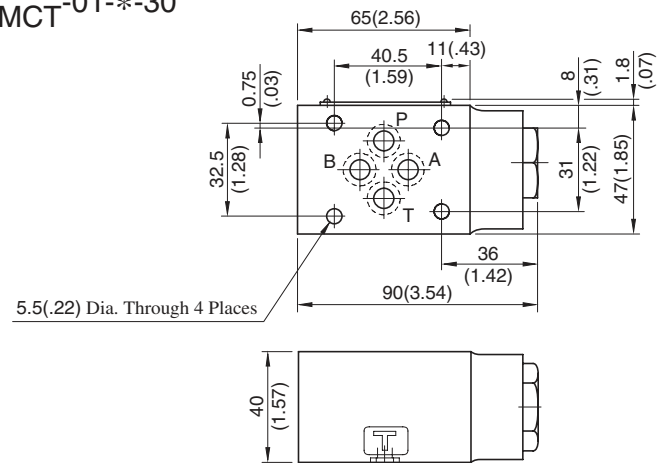
Pressure Drop for Free Flow



Pressure Drop



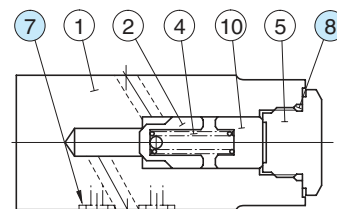
MCP-01
MCT-01



DIMENSIONS IN MILLIMETRES (INCHES)

Approx. Mass..... 1.1 kg (2.4 lbs.)

MCP-01
MCT-01



List of Seals

| Item | Name of Parts | Part Numbers | Qty. | Remarks |
|------|---------------|--------------|------|-----------------------|
| 7 | O-Ring | SO-NB-P9 | 4 | Included in Seal Kit |
| 8 | O-Ring | SO-NB-P18 | 1 | Kit No.: KS-MCP-01-30 |