

01 Series Modular Valves

Type of Modular Valve

Class	Name and Model Numbers	Graphic Symbols	Page	Class	Name and Model Numbers	Graphic Symbols	Page	
Solenoid Operated Directional Valve	(S-) DSG-01-**-**-70 E-DSG-01-**-**-D**-70 T-DSG-01-**-**-D24**-70 G-DSG-01-**-**-**-51		★	Flow Control Valves	Throttle Valves (for "P-Line") MSP-01-50		F-29	
	Pressure Control Valves	Relief Valves (for "P-Line") MBP-01-**-**-70			F-12	Throttle Valves (for "T-Line") MST-01-50		F-29
		Relief Valves (for "A-Line") MBA-01-**-**-70			F-12	Check and Throttle Valves (for "P-Line") MSCP-01-30		F-30
		Relief Valves (for "B-Line") MBB-01-**-**-70			F-12	Throttle and Check Valves (for "A-Line", Meter-out) MSA-01-X-70		F-31
		Reducing Valves (for "P-Line") MRP-01-**-**-70			F-14	Throttle and Check Valves (for "A-Line", Meter-in) MSA-01-Y-70		F-31
		Reducing Valves (for "A-Line") MRA-01-**-**-70			F-14	Throttle and Check Valves (for "B-Line", Meter-out) MSB-01-X-70		F-31
		Reducing Valves (for "B-Line") MRB-01-**-**-70			F-14	Throttle and Check Valves (for "B-Line", Meter-in) MSB-01-Y-70		F-31
		Two Pressure Reducing Valves (for "P-Line") MRDP-01-**-**-10			F-16	Throttle and Check Valves (for "A&B-Lines", Meter-out) MSW-01-X-70		F-31
		Brake Valves MBR-01-**-30			F-18	Throttle and Check Valves (for "A&B-Lines", Meter-in) MSW-01-Y-70		F-31
		Sequence Valves (for "P-Line") MHP-01-**-70			F-19	Throttle and Check Valves (for "A&B-Lines", Meter-out, Meter-in) MSW-01-XY-70		F-31
		Counterbalance Valves (for "A-Line") MHA-01-**-70			F-19	Throttle and Check Valves (for "A&B-Lines", Meter-in, Meter-out) MSW-01-YX-70		F-31
		Counterbalance Valves (for "B-Line") MHB-01-**-70			F-19	Directional Control Valves	Check Valves (for "P-Line") MCP-01-**-70	
Pressure Switch Valves (for "P-Line") MJP-01-**-**-10			F-22	Check Valves (for "A-Line") MCA-01-**-70			F-33	
Pressure Switch Valves (for "A-Line") MJA-01-**-**-10		F-22	Check Valves (for "B-Line") MCB-01-**-70		F-33			
Pressure Switch Valves (for "B-Line") MJB-01-**-**-10		F-22	Check Valves (for "T-Line") MCT-01-**-70		F-33			
Pressure Switch Valves (for "A&B-Line") MJW-01-J-**-10		F-22	Check Valves (for "A&B-Line") MCW-01-**-70		F-33			
Flow Control Valves (for "P-Line") MFP-01-10		F-25	Anti-Cavitation Valves MAC-01-30		F-35			
Flow Control and Check Valves (for "A-Line", Meter-out) MFA-01-X-10		F-25	Pilot Operated Check Valves (for "A-Line") MPA-01-**-**-70		F-36			
Flow Control and Check Valves (for "A-Line", Meter-in) MFA-01-Y-10		F-25	Pilot Operated Check Valves (for "B-Line") MPB-01-**-**-70		F-36			
Flow Control and Check Valves (for "B-Line", Meter-out) MFB-01-X-10		F-25	Pilot Operated Check Valves (for "A&B-Lines") MPW-01-**-**-70		F-36			
Flow Control and Check Valves (for "B-Line", Meter-in) MFB-01-Y-10		F-25	Modular Plates and Mounting Bolts	End Plates (Blocking Plates) MDC-01-A-30			F-38	
Flow Control and Check Valves (for "A&B-Lines", Meter-out) MFW-01-X-10		F-25		End Plates (Bypass plates) MDC-01-B-30			F-38	
Flow Control and Check Valves (for "A&B-Lines", Meter-in) MFW-01-Y-10		F-25		Connecting Plates (for "P&A-Lines") MDS-01-PA-30			F-38	
Temperature Compensated Throttle and Check Valves (for "A-Line", Meter-out) MSTA-01-X-10		F-27		Connecting Plates (for "P&B-Lines") MDS-01-PB-30		F-38		
Temperature Compensated Throttle and Check Valves (for "B-Line", Meter-out) MSTB-01-X-10		F-27		Connecting Plates (for "A&T-Lines") MDS-01-AT-30		F-38		
Temperature Compensated Throttle and Check Valves (for "A&B-Lines", Meter-out) MSTW-01-X-10		F-27		Base Plates MMC-01-**-40		F-39		
				Bolt Kits MBK-01-**-70		F-41		

★ Please refer to the catalog page of "E: Directional Control Valves"

End Plates

Blocking plates are used for auxiliary mounting surface or for closing unnecessary circuits.

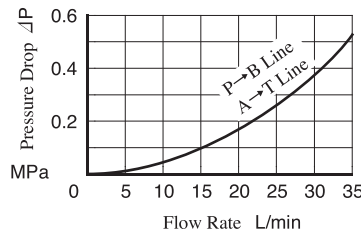
Bypass plates are used for unidirectional circuits that require no solenoid operated directional valves.

Model Number Designation

MDC	-01	-A	-30
Series Number	Plate Size	Type of Plate	Design Number
MDC: End Plate	01	A: Blocking Plate B: Bypass Plate	30

Typical Performance Characteristics

Hydraulic Fluid: Viscosity 35 mm²/s, Specific Gravity 0.850



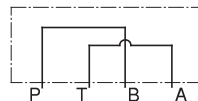
Specifications

Model Numbers	Max. Operating Pressure MPa	Max. Flow L/min
MDC-01-* -30	31.5	35

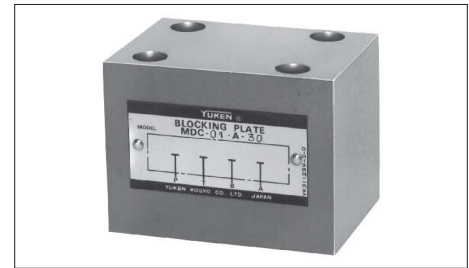
Graphic Symbols



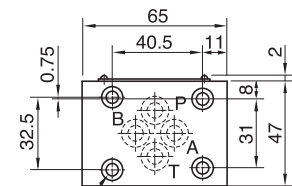
MDC-01-A



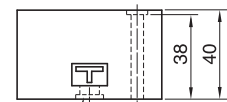
MDC-01-B



MDC-01



5.5 Dia. Through
9.5 Spotface 4 Places



O-Ring for Port
(OR NBR-90 P9-N...4 Pcs.)

Approx. Mass.....1 kg

Connecting Plates

These plates are used for detecting pressure of each line.

Model Number Designation

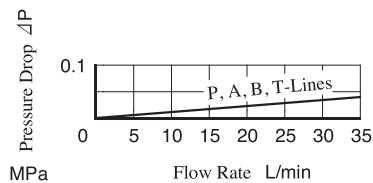
MDS	-01	-PA	-30
Series Number	Plate Size	Type of Detecting Line	Design Number
MDS: Connecting Plate	01	PA: P&A-Lines PB: P&B-Lines AT: A&T-Lines	30

Specifications

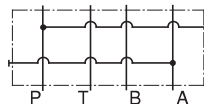
Model Numbers	Max. Operating Pressure MPa	Max. Flow L/min
MDS-01-* -30	31.5	35

Pressure Drop

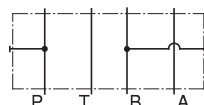
Hydraulic Fluid: Viscosity 35 mm²/s, Specific Gravity 0.850



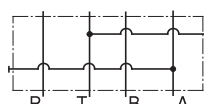
Graphic Symbols



MDS-01-PA



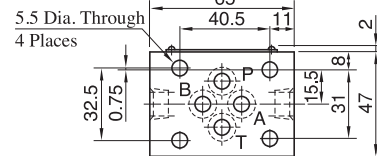
MDS-01-PB



MDS-01-AT



MDS-01



Port "X"
Rc 1/4

Port "Y"
Rc 1/4

O-Ring for Port
(OR NBR-90 P9-N: 4 Pcs.)

Approx. Mass.....0.8 kg

Model Numbers	Pressure Detecting Line	
	Port "X"	Port "Y"
MDS-01-PA	P-Line	A-Line
MDS-01-PB	B-Line	P-Line
MDS-01-AT	T-Line	A-Line